

SPANISH MIGRATIONS EARLIER 20th CENTURY

Jana Godó, Berta Burria, Gisela Claramunt, Nuria Mir and Emma Valls

When?

The emigrations were between 1905, 1912 and 1920.

Why?

In Spain there were a lot of poor people and they emigrated to different regions for get better living, economical and health

Consequences:

The immigrant people come from countries in poor conditions because there were wars, lack of money and demographic consequences . A lot of people were forced to leave the country.

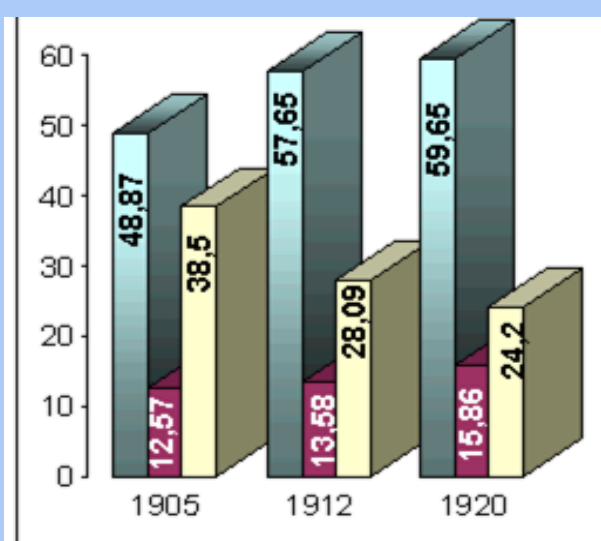


From where to where:

The people of Spain emigrated in:

In 1905, 1912 and 1920 were the years with more emigration. The most of immigrants were from Cuba. Others from America, Argentina, Brazil, Argelia and France.

Here you'll see the spanish migrations from Spain to Indias, between this centuries. Spain is the city with more economical migration. The spanish people went to America between 2 and 4 millions.



PROFESSIONS OF IMMIGRANTS:

- Farmers
- Another professions
- Any profession

